

# Sustainable travel 2.0

MEDICUS MUNDI INTERNATIONAL FEBRUARY 29TH 2024

[Travel@itg.be](mailto:Travel@itg.be)  
[VWM@itg.be](mailto:VWM@itg.be)



# Agenda

- Intro ITM
- Travel Policy
- Process
- Challenges
- Advice
- Q & A

# Intro

## ■ Travel Lead

- Flights/trains/hotels
- Visa
- Security
- Sustainability

## ■ SHE Team


- Wellbeing@work
- Prevention advisors
- Occupational physician, psychologist
- Biosafety & Environmental coordinator
  
- We take care of permitting
- We contribute to risk management
- We track ESG-performance

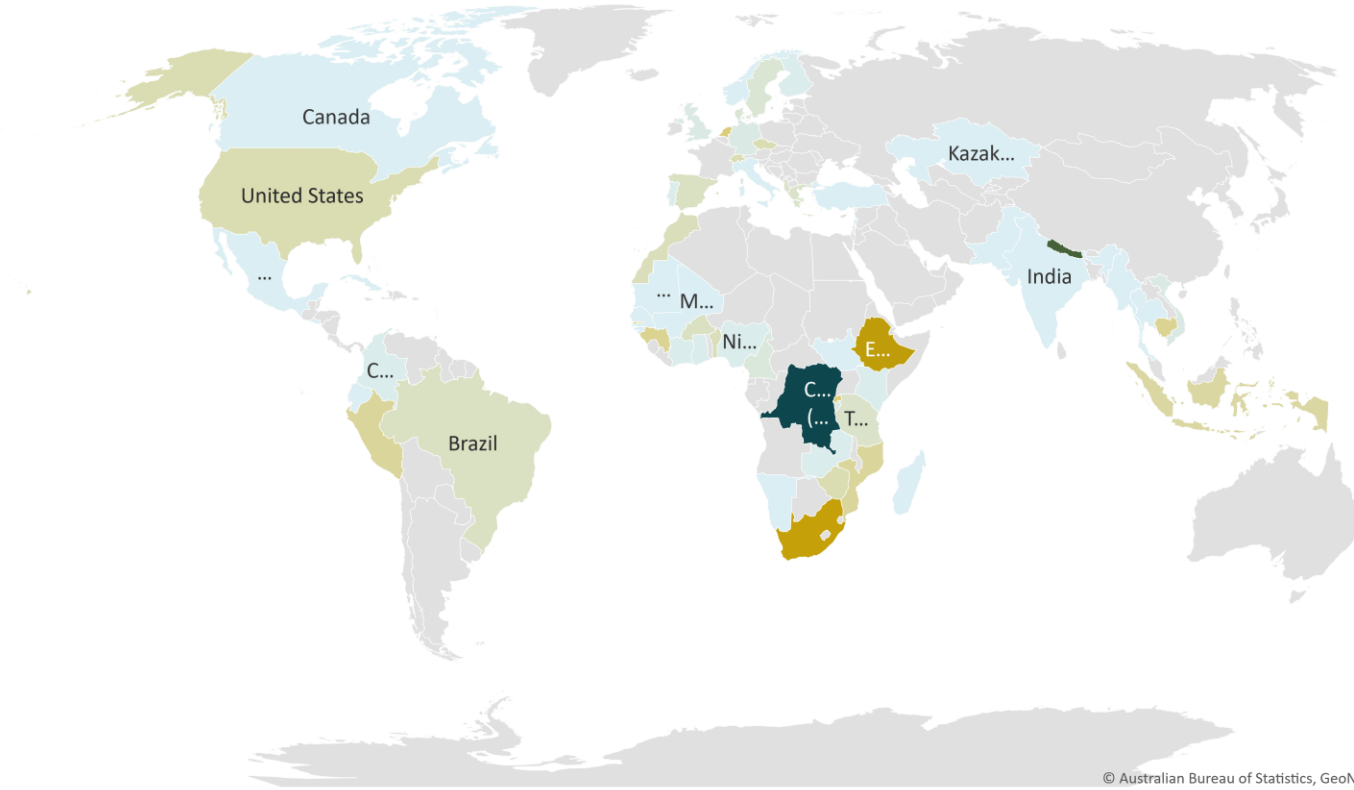
➔ Rooted in ITMs operations as supporting staff

# Our core activities



# ITM-Destinations 2023

# trips to countries   
1 31 61



Powered by Bing  
© Australian Bureau of Statistics, GeoNames, Microsoft, Navinfo, TomTom, Wikipedia



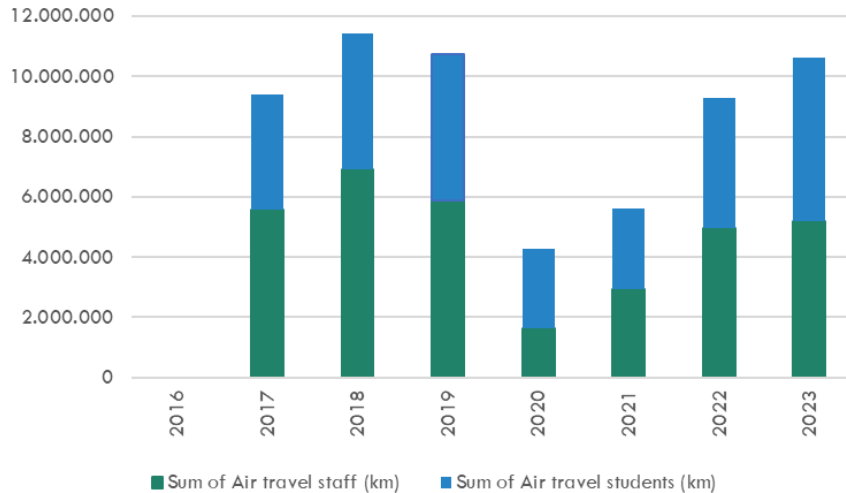
# Travel policy: Sustainable Travel 1.0

- Since November 2020
- Travel office & digital travel request via Zenya
- Omnia Travel for AIR-TRAIN-HOTEL
- ABC principle
  - Avoid international travel: WORK ONLINE
  - Book an alternative: TRAIN + 6/8 hours list (OOP)
  - Compensate emissions

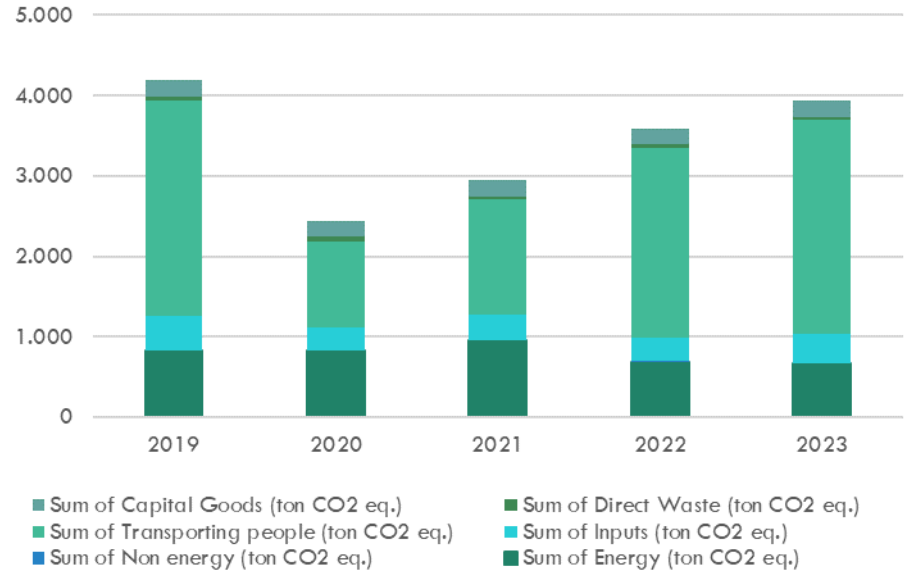


# ITM Travel & carbon footprint

Airtravel (km)



Carbon footprint (ton CO2 eq.)

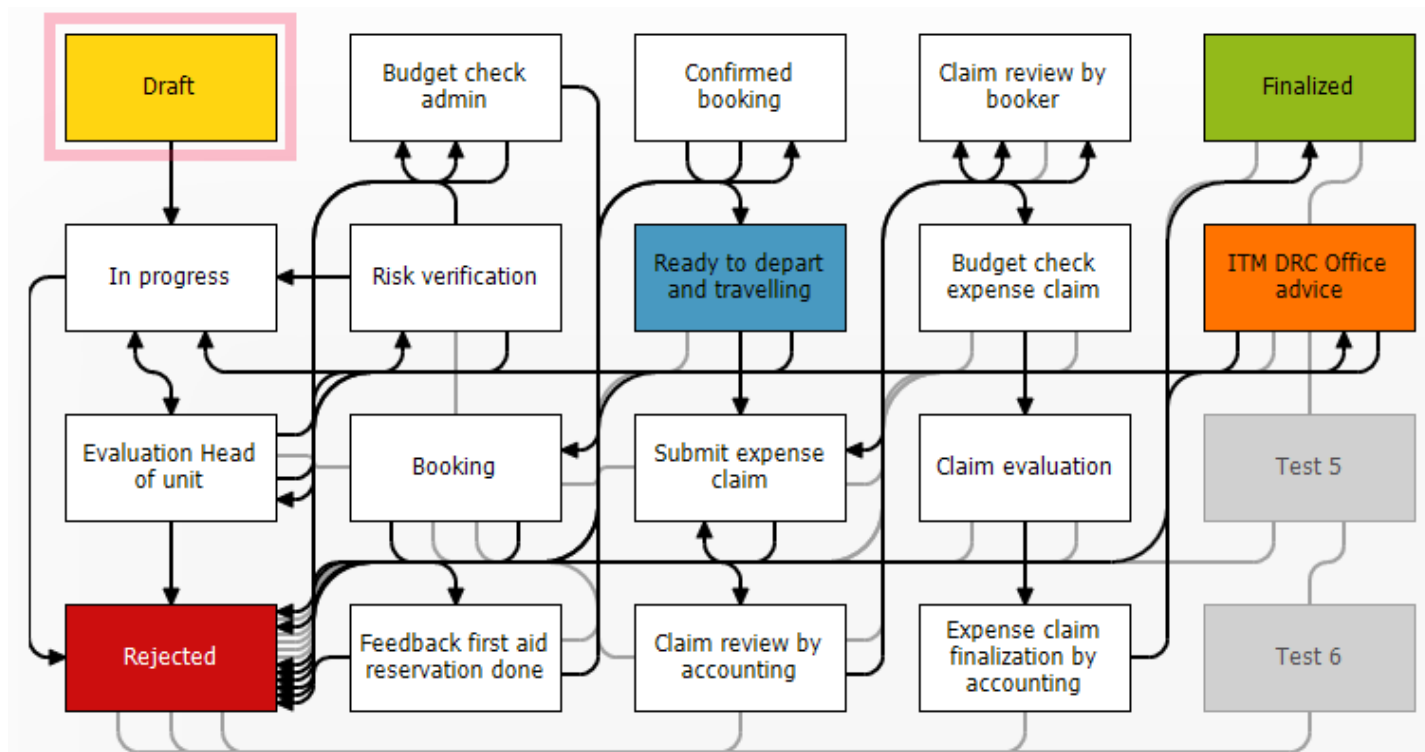


## Travel policy: Sustainable Travel 2.0

- Start: 1/1/2024, for a period of 5 years
- Using current tools & data (Zenya & Omnia GO)
- Start compensating for emissions linked to travel
- HOW?:
  - €40/ton CO2 (including RFI)
  - Jury decides on budget spending
  - Not (yet) compulsory: opt in checkbox, can be checked off
- ➔ GOAL: -15% travel + keep within current travel budget + in line with science



# Process



## Process

- Input via business travel pioneers
- Politics & decision making
- Checking data quality
- ITM travel survey: checking support, raising awareness & looking for common ground
- Implementation



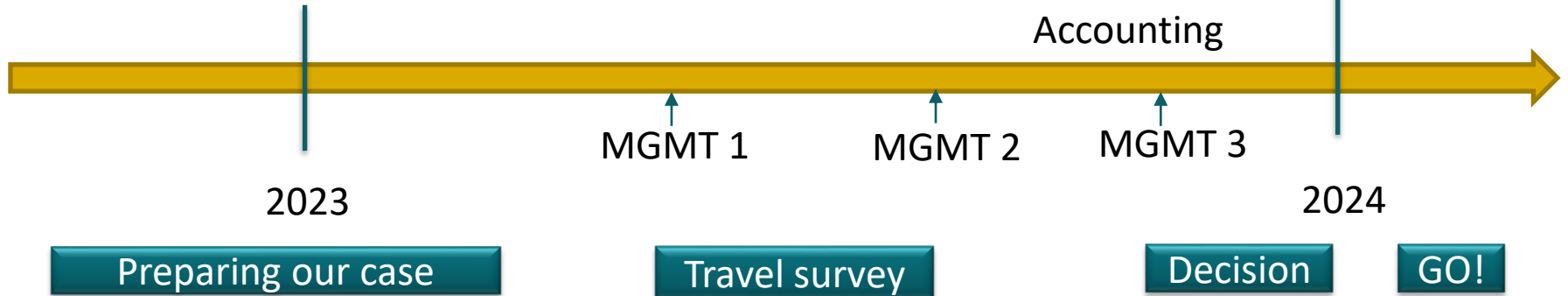
# Politics!

9/22 Travel Info session

Student office  
Departmental meetings  
Academic council  
DRC office

Funders: FWO/DGD

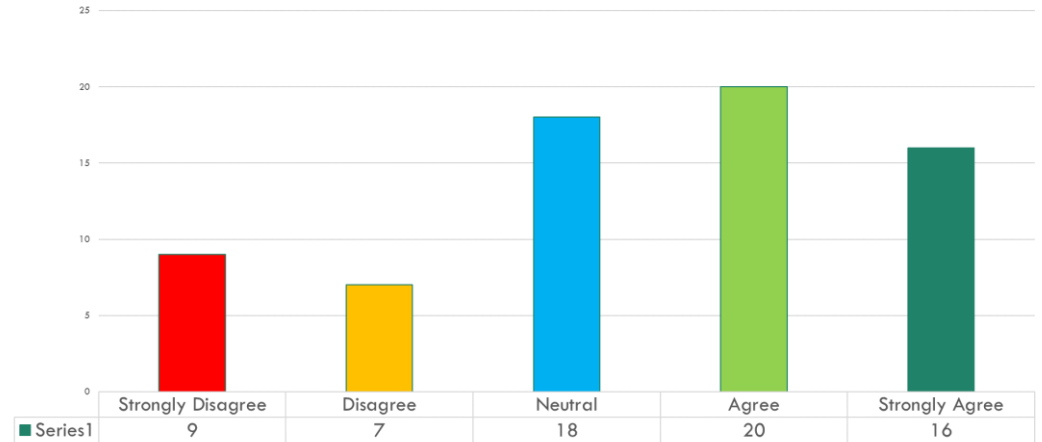
Travel Agency  
Accounting



# Travel Survey summer 2023

- 70 in depth responses
- Shows sufficient support
- Valid concerns
  - Fair, raises awareness, makes responsible
  - Only status quo, beware of naming & shaming, greenwashing, burden on dedicated budgets, don't punish starters
- GO -15% target unnecessary travel

ITM Support for compensating emissions



# Challenges

- Data quality is key
  - Amount of emissions?
  - How to calculate: ICAO vs Bilan Carbon?
  - Who is paying?
- Budget constraints + role of funders
- Decarbonizing the sector

## The critical role of funders in shrinking the carbon footprint of research

Teun Bousema • Leonard Burtcher • Ronald P van Rij • Didier Barret • Kate Whitfield ✉

Open Access • Published: January, 2022 • DOI: [https://doi.org/10.1016/S2542-5196\(21\)00276-X](https://doi.org/10.1016/S2542-5196(21)00276-X)

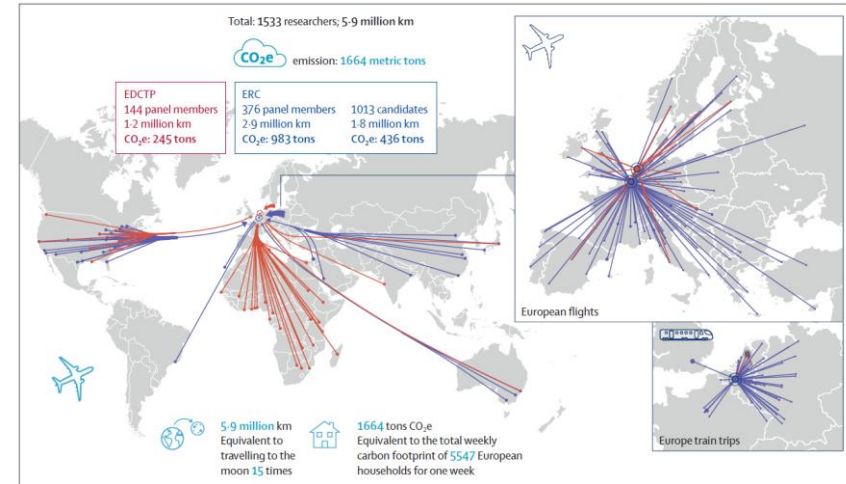


Figure: Travel associated with EDCTP and ERC STG review meetings in 2019

[https://doi.org/10.1016/S2542-5196\(21\)00276-X](https://doi.org/10.1016/S2542-5196(21)00276-X)

## Challenges

- Quality of offsetting
- (lack of) legislation
  - Funder rules
  - EU legislation ETS for aviation
- How to manage resistance
- Trade off: €€€ 'lost' for offsetting: less €€€ for social impact

**Revealed: more than 90% of rainforest carbon offsets by biggest certifier are worthless, analysis shows**

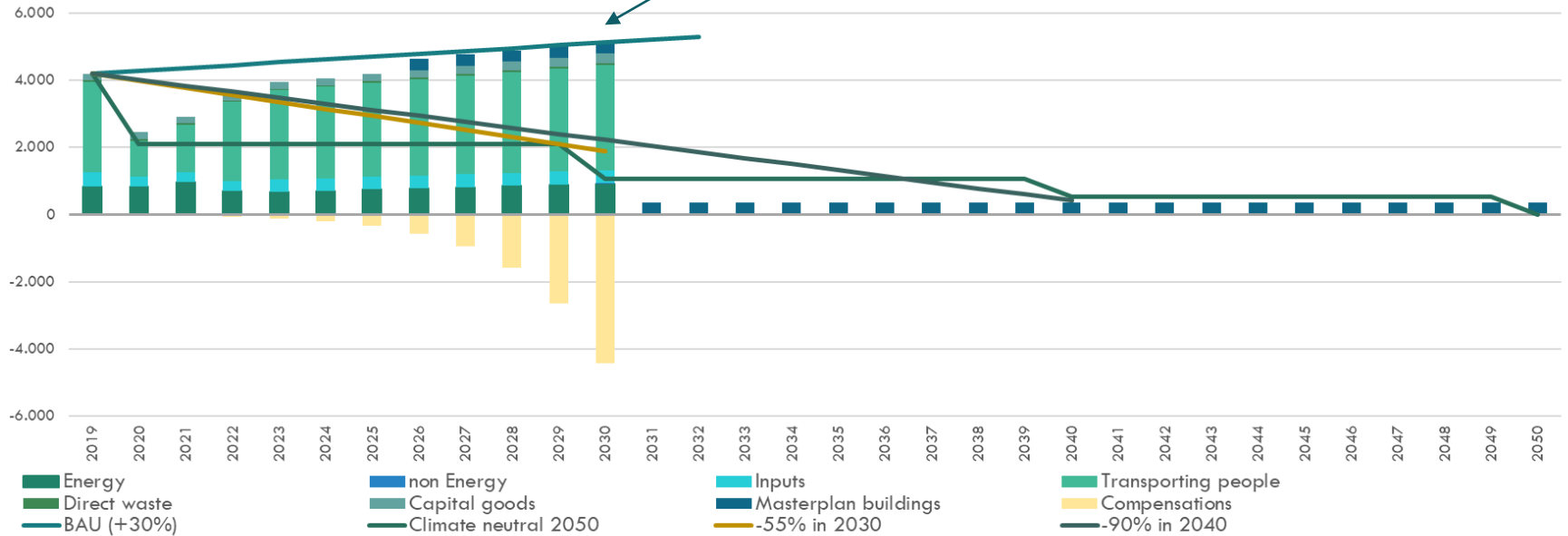
## Advice

- Look at peers
  - Network
  - Measure & look ahead
- ➔ just **start + adjust along the way** in order to **do better**

# ITM-Roadmap to 2050

Carbon footprint (ton CO2 eq.)

BAU 2030 Scenario +30% staff & +30% m<sup>2</sup>





## Q & A

### ■ Contact?

- [Travel@itg.be](mailto:Travel@itg.be)
- [Vwm@itg.be](mailto:Vwm@itg.be)



**INSTITUTE  
OF TROPICAL  
MEDICINE  
ANTWERP**